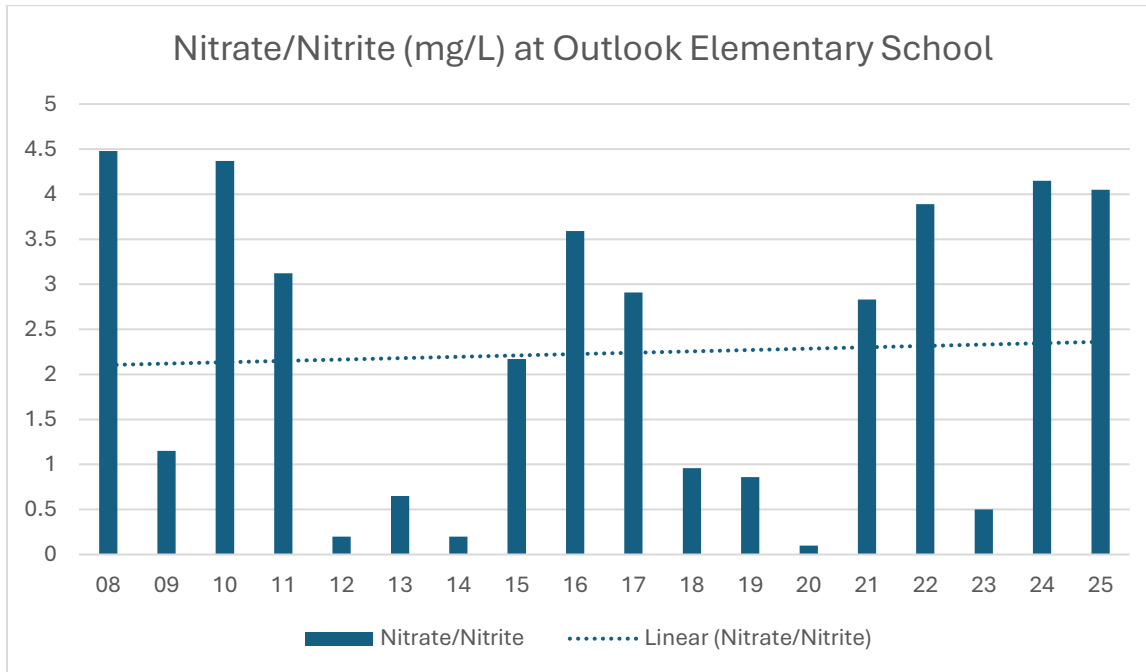


Outlook Elementary School

System ID 64940M

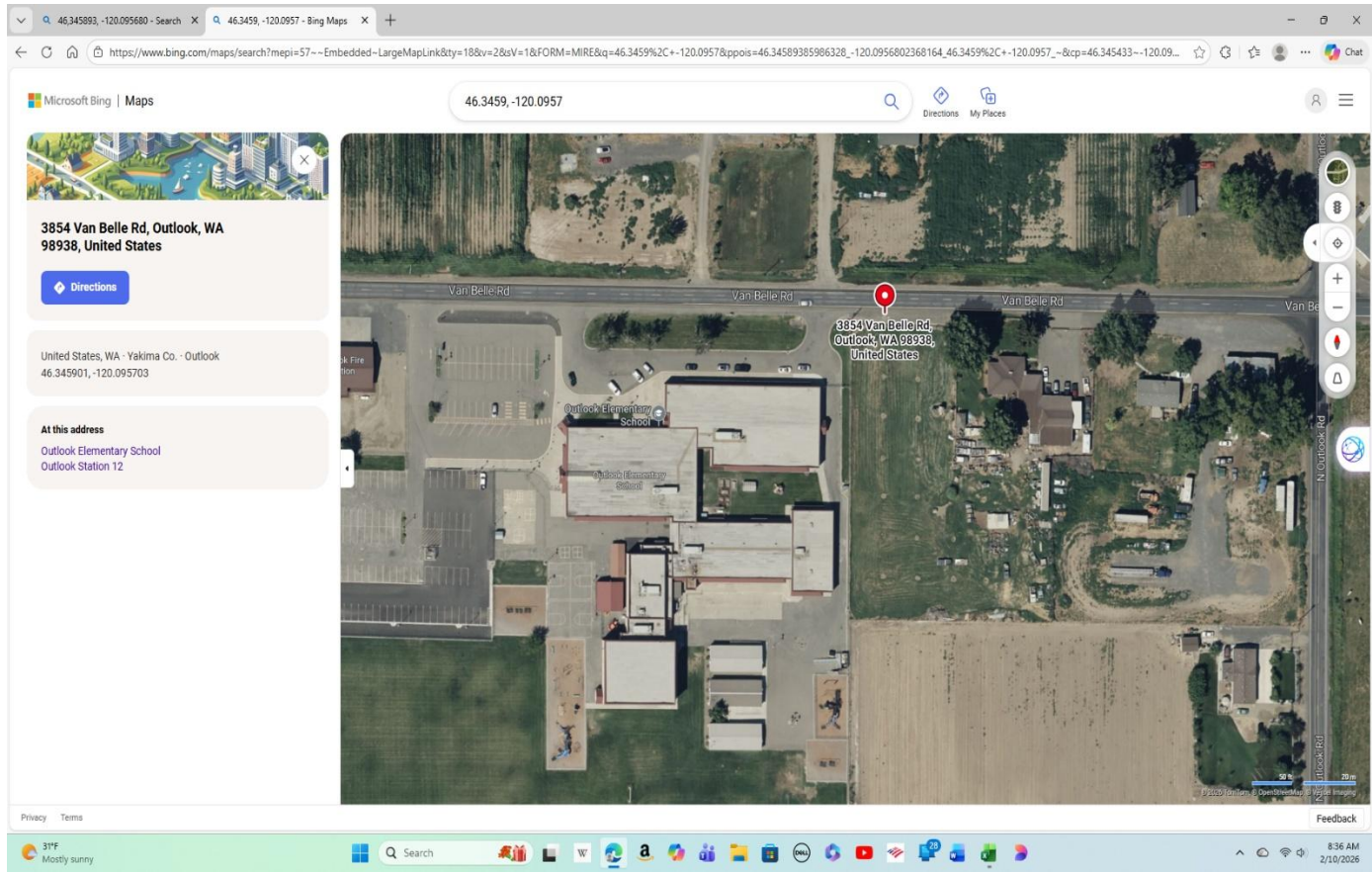


Nitrate N plus Nitrite N

	'03	'03	'04	'04	'04	'04	'05	'05	'05	'05	'06	'06	'06	'07	'07	'07	'07
Nitrate/Nitrite	5.7	5.55	6.69	9.25	5.82	8.95	9.3	8.03	6.24	6.77	9.77	6.07	8.18	8.23	8.52	10.36	10.04

	'08	'09	'10	'11	'12	'13	'14	'15	'16	'17	'18	'19	'20	'21	'22	'23	'24	'25
Nitrate/Nitrite	4.48	1.15	4.37	3.12	0.20	0.65	0.20	2.17	3.59	2.91	0.96	0.86	0.1	2.83	3.89	0.5	4.15	4.05

LYV GWMA test well #011 near Outlook Elementary School showed a sharp nitrate increase in 2025. It is advisable to increase monitoring for Nitrate/Nitrite at the school.



GWMA Dedicated Monitoring Wells in the Lower Yakima Valley					
Well ID	Well depth (ft)	Latitude	Longitude	Date	Nitrate-N (ppm)
LYV-MW-011	36.2	46.345893	-120.095680	9/22/2021	18.5
LYV-MW-011	36.2	46.345893	-120.095680	12/21/2021	18.5
LYV-MW-011	36.2	46.345893	-120.095680	3/20/2022	17.8
LYV-MW-011	36.2	46.345893	-120.095680	6/20/2022	16.5
LYV-MW-011	36.2	46.345893	-120.095680	9/22/2022	17.0
LYV-MW-011	36.2	46.345893	-120.095680	12/21/2022	16.0
LYV-MW-011	36.2	46.345893	-120.095680	3/20/2023	19.7
LYV-MW-011	36.2	46.345893	-120.095680	6/20/2024	15.6
LYV-MW-011	36.2	46.345893	-120.095680	9/22/2025	59.2

View Sample Detail - WSID 64940M - OUTLOOK ELEMENTARY SCHOOL

Collect Date 1/10/2003
 Lab Number 149
 Lab Name Alliance Analytical-Now 151-Cascade
 Sample Number 00847
 Source 02
 Analyte Group IOC-INORGANIC CONTAMINANTS
 Test Panel NIT-NITRATE SUITE
 Sample Location test port off mainline
 Sample Type Pre-Treatment / Raw

Result Range, A/P, Units: M

Analyte DOH Num	Analyte Name	Result Range	Result Quantity	Maximum Contaminant Level	State Reporting Limit
0020	NITRATE-N	EQ	5.7000	10.0000	0.5000

View Sample Detail - WSID 64940M - OUTLOOK ELEMENTARY SCHOOL

Collect Date 6/30/2003
 Lab Number 105
 Lab Name Eurofins Cascade Analytical-Wenatch
 Sample Number 08011
 Source 02
 Analyte Group IOC-INORGANIC CONTAMINANTS
 Test Panel NIT-NITRATE SUITE
 Sample Location mop sink
 Sample Type Unknown

Result Range, A/P, Un

Analyte DOH Num	Analyte Name	Result Range	Result Quantity	Maximum Contaminant Level	State Reporting Limit
0020	NITRATE-N	EQ	5.5500	10.0000	0.5000
0161	TOTAL NITRATE/NITRITE	EQ	5.5500		0.5000
0114	NITRITE-N	LT	0.0700	1.0000	0.1000

View Sample Detail - WSID 64940M - OUTLOOK ELEMENTARY SCHOOL

Collect Date 3/31/2004
Lab Number 153
Lab Name Valley Environmental Laboratory
Sample Number 33104
Source 02
Analyte Group IOC-INORGANIC CONTAMINANTS
Test Panel NIT-NITRATE SUITE
Sample Location mop sink janitor rm
Sample Type Unknown

Result Range, A/P, Unit

Analyte DOH Num	Analyte Name	Result Range	Result Quantity	Maximum Contaminant Level	State Reporting Limit
0020	NITRATE-N	EQ	6.6900	10.0000	0.5000

View Sample Detail - WSID 64940M - OUTLOOK ELEMENTARY SCHOOL

Collect Date 6/15/2004
Lab Number 153
Lab Name Valley Environmental Laboratory
Sample Number 61515
Source 02
Analyte Group IOC-INORGANIC CONTAMINANTS
Test Panel NIT-NITRATE SUITE
Sample Location janitor mop sink
Sample Type Pre-Treatment / Raw

Result Range, A/P, Unit

Analyte DOH Num	Analyte Name	Result Range	Result Quantity	Maximum Contaminant Level	State Reporting Limit
0020	NITRATE-N	EQ	9.2500	10.0000	0.5000

View Sample Detail - WSID 64940M - OUTLOOK ELEMENTARY SCHOOL

Collect Date 9/24/2004
 Lab Number 153
 Lab Name Valley Environmental Laboratory
 Sample Number 92406
 Source 02
 Analyte Group IOC-INORGANIC CONTAMINANTS
 Test Panel NIT-NITRATE SUITE
 Sample Location MOP SINK - JANITORS ROOM
 Sample Type Pre-Treatment / Raw

Result Range, A/P, Units: N

Analyte DOH Num	Analyte Name	Result Range	Result Quantity	Maximum Contaminant Level	State Reporting Limit
0020	NITRATE-N	EQ	5.8200	10.0000	0.5000

View Sample Detail - WSID 64940M - OUTLOOK ELEMENTARY SCHOOL

Collect Date 12/29/2004
 Lab Number 153
 Lab Name Valley Environmental Laboratory
 Sample Number 09008
 Source 02
 Analyte Group IOC-INORGANIC CONTAMINANTS
 Test Panel NIT-NITRATE SUITE
 Sample Location whd test port
 Sample Type Post-Treatment / Finished

Result Range, A/P, Ur

Analyte DOH Num	Analyte Name	Result Range	Result Quantity	Maximum Contaminant Level	State Reporting Limit
0020	NITRATE-N	EQ	8.9500	10.0000	0.5000

View Sample Detail - WSID 64940M - OUTLOOK ELEMENTARY SCHOOL

Collect Date 3/30/2005
Lab Number 153
Lab Name Valley Environmental Laboratory
Sample Number 33001
Source 02
Analyte Group IOC-INORGANIC CONTAMINANTS
Test Panel NIT-NITRATE SUITE
Sample Location whd test port
Sample Type Pre-Treatment / Raw

Result Range, A/P, Unit

Analyte DOH Num	Analyte Name	Result Range	Result Quantity	Maximum Contaminant Level	State Reporting Limit
0020	NITRATE-N	EQ	9.3000	10.0000	0.5000

View Sample Detail - WSID 64940M - OUTLOOK ELEMENTARY SCHOOL

Collect Date 6/23/2005
Lab Number 153
Lab Name Valley Environmental Laboratory
Sample Number 62315
Source 02
Analyte Group IOC-INORGANIC CONTAMINANTS
Test Panel NIT-NITRATE SUITE
Sample Location janitor sink
Sample Type Pre-Treatment / Raw

Result Range, A/P, Units:

Analyte DOH Num	Analyte Name	Result Range	Result Quantity	Maximum Contaminant Level	State Reporting Limit
0020	NITRATE-N	EQ	8.0300	10.0000	0.5000

View Sample Detail - WSID 64940M - OUTLOOK ELEMENTARY SCHOOL

Collect Date 9/8/2005
 Lab Number 151
 Lab Name Eurofins Cascade Analytical-Yakima
 Sample Number 16239
 Source 02
 Analyte Group IOC-INORGANIC CONTAMINANTS
 Test Panel NIT-NITRATE SUITE
 Sample Location mop sink janitor
 Sample Type Post-Treatment / Finished

Result Range, A/P, U

Analyte DOH Num	Analyte Name	Result Range	Result Quantity	Maximum Contaminant Level	State Reporting Limit
0020	NITRATE-N	EQ	6.2400	10.0000	0.5000
0161	TOTAL NITRATE/NITRITE	EQ	6.2400		0.5000
0114	NITRITE-N	LT	0.1000	1.0000	0.1000

View Sample Detail - WSID 64940M - OUTLOOK ELEMENTARY SCHOOL

Collect Date 12/15/2005
 Lab Number 153
 Lab Name Valley Environmental Laboratory
 Sample Number 07613
 Source 02
 Analyte Group IOC-INORGANIC CONTAMINANTS
 Test Panel NIT-NITRATE SUITE
 Sample Location whd
 Sample Type Post-Treatment / Finished

Result Range, A/P, Unit

Analyte DOH Num	Analyte Name	Result Range	Result Quantity	Maximum Contaminant Level	State Reporting Limit
0020	NITRATE-N	EQ	6.7700	10.0000	0.5000

View Sample Detail - WSID 64940M - OUTLOOK ELEMENTARY SCHOOL

Collect Date 6/13/2006
Lab Number 153
Lab Name Valley Environmental Laboratory
Sample Number 61328
Source 02
Analyte Group IOC-INORGANIC CONTAMINANTS
Test Panel NIT-NITRATE SUITE
Sample Location mop sink
Sample Type Post-Treatment / Finished

Result Range, A/P, U

Analyte DOH Num	Analyte Name	Result Range	Result Quantity	Maximum Contaminant Level	State Reporting Limit
0020	NITRATE-N	EQ	9.7700	10.0000	0.5000

View Sample Detail - WSID 64940M - OUTLOOK ELEMENTARY SCHOOL

Collect Date 12/5/2006
Lab Number 153
Lab Name Valley Environmental Laboratory
Sample Number 06607
Source 02
Analyte Group IOC-INORGANIC CONTAMINANTS
Test Panel NIT-NITRATE SUITE
Sample Location MOP SINK
Sample Type Post-Treatment / Finished

Result Range, A/P, Un

Analyte DOH Num	Analyte Name	Result Range	Result Quantity	Maximum Contaminant Level	State Reporting Limit
0020	NITRATE-N	EQ	6.0700	10.0000	0.5000

View Sample Detail - WSID 64940M - OUTLOOK ELEMENTARY SCHOOL

Collect Date 9/27/2006
Lab Number 153
Lab Name Valley Environmental Laboratory
Sample Number 92711
Source 02
Analyte Group IOC-INORGANIC CONTAMINANTS
Test Panel NIT-NITRATE SUITE
Sample Location janitors room
Sample Type Post-Treatment / Finished

Result Range, A/P, Units:

Analyte DOH Num	Analyte Name	Result Range	Result Quantity	Maximum Contaminant Level	State Reporting Limit
0020	NITRATE-N	EQ	8.1800	10.0000	0.5000

View Sample Detail - WSID 64940M - OUTLOOK ELEMENTARY SCHOOL

Collect Date 6/19/2007
Lab Number 153
Lab Name Valley Environmental Laboratory
Sample Number 61906
Source 02
Analyte Group IOC-INORGANIC CONTAMINANTS
Test Panel NIT-NITRATE SUITE
Sample Location mop sink
Sample Type Post-Treatment / Finished

Result Range, A/P, Uni

Analyte DOH Num	Analyte Name	Result Range	Result Quantity	Maximum Contaminant Level	State Reporting Limit
0020	NITRATE-N	EQ	8.2300	10.0000	0.5000

View Sample Detail - WSID 64940M - OUTLOOK ELEMENTARY SCHOOL

Collect Date 9/5/2007
Lab Number 153
Lab Name Valley Environmental Laboratory
Sample Number 90509
Source 02
Analyte Group IOC-INORGANIC CONTAMINANTS
Test Panel NIT-NITRATE SUITE
Sample Location mop sink
Sample Type Post-Treatment / Finished

Result Range, A/P, U

Analyte DOH Num	Analyte Name	Result Range	Result Quantity	Maximum Contaminant Level	State Reporting Limit
0020	NITRATE-N	EQ	8.5200	10.0000	0.5000

View Sample Detail - WSID 64940M - OUTLOOK ELEMENTARY SCHOOL

Collect Date 12/13/2007
Lab Number 153
Lab Name Valley Environmental Laboratory
Sample Number 07411
Source 02
Analyte Group IOC-INORGANIC CONTAMINANTS
Test Panel NIT-NITRATE SUITE
Sample Location janitor sink
Sample Type Pre-Treatment / Raw

Result Range, A/P, Unit

Analyte DOH Num	Analyte Name	Result Range	Result Quantity	Maximum Contaminant Level	State Reporting Limit
0020	NITRATE-N	EQ	10.3600	10.0000	0.5000

View Sample Detail - WSID 64940M - OUTLOOK ELEMENTARY SCHOOL

Collect Date 12/21/2007
 Lab Number 153
 Lab Name Valley Environmental Laboratory
 Sample Number 08203
 Source 02
 Analyte Group IOC-INORGANIC CONTAMINANTS
 Test Panel NIT-NITRATE SUITE
 Sample Location mop sink
 Sample Type Pre-Treatment / Raw

Result Range, A/P, Units: M

Analyte DOH Num	Analyte Name	Result Range	Result Quantity	Maximum Contaminant Level	State Reporting Limit
0020	NITRATE-N	EQ	10.0400	10.0000	0.5000

View Sample Detail - WSID 64940M - OUTLOOK ELEMENTARY SCHOOL

Collect Date 1/3/2008
 Lab Number 153
 Lab Name Valley Environmental Laboratory
 Sample Number 10306
 Source 03
 Analyte Group IOC-INORGANIC CONTAMINANTS
 Test Panel NIT-NITRATE SUITE
 Sample Location new well tap
 Sample Type Post-Treatment / Finished

Result Range, A/P, Units

Analyte DOH Num	Analyte Name	Result Range	Result Quantity	Maximum Contaminant Level	State Reporting Limit
0020	NITRATE-N	EQ	4.4800	10.0000	0.5000

View Sample Detail - WSID 64940M - OUTLOOK ELEMENTARY SCHOOL

Collect Date 6/29/2009
Lab Number 153
Lab Name Valley Environmental Laboratory
Sample Number 62912
Source 03
Analyte Group IOC-INORGANIC CONTAMINANTS
Test Panel NIT-NITRATE SUITE
Sample Location mop sink
Sample Type Pre-Treatment / Raw

Result Range, A/P, Unit

Analyte DOH Num	Analyte Name	Result Range	Result Quantity	Maximum Contaminant Level	State Reporting Limit
0020	NITRATE-N	EQ	1.1500	10.0000	0.5000

View Sample Detail - WSID 64940M - OUTLOOK ELEMENTARY SCHOOL

Collect Date 6/17/2010
Lab Number 153
Lab Name Valley Environmental Laboratory
Sample Number 61719
Source 03
Analyte Group IOC-INORGANIC CONTAMINANTS
Test Panel NIT-NITRATE SUITE
Sample Location workroom
Sample Type Post-Treatment / Finished

Result Range, A/P, U

Analyte DOH Num	Analyte Name	Result Range	Result Quantity	Maximum Contaminant Level	State Reporting Limit
0020	NITRATE-N	EQ	4.3700	10.0000	0.5000

View Sample Detail - WSID 64940M - OUTLOOK ELEMENTARY SCHOOL

Collect Date 6/28/2011
Lab Number 153
Lab Name Valley Environmental Laboratory
Sample Number 62821
Source 03
Analyte Group IOC-INORGANIC CONTAMINANTS
Test Panel NIT-NITRATE SUITE
Sample Location main kitchen
Sample Type Post-Treatment / Finished

Result Range, A/P, Unit

Analyte	DOH Num	Analyte Name	Result Range	Result Quantity	Maximum Contaminant Level	State Reporting Limit
	0020	NITRATE-N	EQ	3.1200	10.0000	0.5000

View Sample Detail - WSID 64940M - OUTLOOK ELEMENTARY SCHOOL

Collect Date 4/9/2012
 Lab Number 153
 Lab Name Valley Environmental Laboratory
 Sample Number 40911
 Source 03
 Analyte Group IOC-INORGANIC CONTAMINANTS
 Test Panel IOC-COMPLETE INORGANIC ANALYSIS
 Sample Location well
 Sample Type Post-Treatment / Finished

Result Range

Analyte DOH Num	Analyte Name	Result Range	Result Quantity	Maximum Contaminant Level	State Reporting L
0004	ARSENIC	EQ	0.0079	0.0104	0.0010
0005	BARIUM	EQ	0.1180	2.0000	0.1000
0006	CADMIUM	EQ	0.0023	0.0050	0.0010
0008	IRON	EQ	0.1500	0.3000	0.1000
0009	LEAD	EQ	0.0035		0.0010
0010	MANGANESE	EQ	0.0471	0.0500	0.0100
0014	SODIUM	EQ	15.9000		5.0000
0015	HARDNESS	EQ	218.0000		10.0000
0016	CONDUCTIVITY	EQ	603.0000	700.0000	70.0000
0017	TURBIDITY	EQ	0.7800		0.1000
0018	COLOR	EQ	2.0000	15.0000	15.0000
0022	SULFATE	EQ	70.0000	250.0000	50.0000
0026	TDS-TOTAL DISSOLVED SOLIDS	EQ	3.1400	500.0000	100.0000
0110	BERYLLIUM	EQ	0.0003	0.0040	0.0003
0112	ANTIMONY	EQ	0.0046	0.0060	0.0030
0113	THALLIUM	EQ	0.0012	0.0020	0.0010
0007	CHROMIUM	LT	0.0200	0.1000	0.0070
0011	MERCURY	LT	0.0004	0.0020	0.0002
0012	SELENIUM	LT	0.0100	0.0500	0.0020
0013	SILVER	LT	0.1000	0.1000	0.1000
0019	FLUORIDE	LT	0.5000	4.0000	0.2000
0020	NITRATE-N	LT	0.2000	10.0000	0.5000
0021	CHLORIDE	LT	20.0000	250.0000	20.0000
0023	COPPER	LT	0.0200		0.0200
0024	ZINC	LT	0.2000	5.0000	0.2000

View Sample Detail - WSID 64940M - OUTLOOK ELEMENTARY SCHOOL

Collect Date 4/17/2013
Lab Number 153
Lab Name Valley Environmental Laboratory
Sample Number 41732
Source 03
Analyte Group IOC-INORGANIC CONTAMINANTS
Test Panel NIT-NITRATE SUITE
Sample Location whd
Sample Type Post-Treatment / Finished

Result Range, A/P, Unit

Analyte DOH Num	Analyte Name	Result Range	Result Quantity	Maximum Contaminant Level	State Reporting Limit
0020	NITRATE-N	EQ	0.6460	10.0000	0.5000

View Sample Detail - WSID 64940M - OUTLOOK ELEMENTARY SCHOOL

Collect Date 5/27/2014
Lab Number 227
Lab Name Valley Laboratory
Sample Number 52703
Source 03
Analyte Group IOC-INORGANIC CONTAMINANTS
Test Panel NIT-NITRATE SUITE
Sample Location janitors tm
Sample Type Post-Treatment / Finished

Result Range, A/P, Unit

Analyte DOH Num	Analyte Name	Result Range	Result Quantity	Maximum Contaminant Level	State Reporting Limit
0020	NITRATE-N	LT	0.2000	10.0000	0.5000

View Sample Detail - WSID 64940M - OUTLOOK ELEMENTARY SCHOOL

Collect Date 5/1/2015
Lab Number 227
Lab Name Valley Laboratory
Sample Number 50113
Source 03
Analyte Group IOC-INORGANIC CONTAMINANTS
Test Panel NIT-NITRATE SUITE
Sample Location sink
Sample Type Post-Treatment / Finished

Result Range, A/P, U

Analyte DOH Num	Analyte Name	Result Range	Result Quantity	Maximum Contaminant Level	State Reporting Limit
0020	NITRATE-N	EQ	2.1700	10.0000	0.5000

View Sample Detail - WSID 64940M - OUTLOOK ELEMENTARY SCHOOL

Collect Date 11/1/2016
Lab Number 230
Lab Name LabTest
Sample Number 30656
Source 03
Analyte Group IOC-INORGANIC CONTAMINANTS
Test Panel NIT-NITRATE SUITE
Sample Location s/t
Sample Type Post-Treatment / Finished

Result Range, A/P, Un

Analyte DOH Num	Analyte Name	Result Range	Result Quantity	Maximum Contaminant Level	State Reporting Limit
0020	NITRATE-N	EQ	3.5900	10.0000	0.5000

View Sample Detail - WSID 64940M - OUTLOOK ELEMENTARY SCHOOL

Collect Date 12/27/2017
 Lab Number 230
 Lab Name LabTest
 Sample Number 36127
 Source 03
 Analyte Group IOC-INORGANIC CONTAMINANTS
 Test Panel NIT-NITRATE SUITE
 Sample Location sink
 Sample Type Post-Treatment / Finished

Result Range, A/P, Uni

Analyte DOH Num	Analyte Name	Result Range	Result Quantity	Maximum Contaminant Level	State Reporting Limit
0020	NITRATE-N	EQ	2.9120	10.0000	0.5000
0161	TOTAL NITRATE/NITRITE	EQ	2.9120		0.5000
0114	NITRITE-N	LT	0.2000	1.0000	0.1000

View Sample Detail - WSID 64940M - OUTLOOK ELEMENTARY SCHOOL

Collect Date 7/2/2018
 Lab Number 230
 Lab Name LabTest
 Sample Number 18336
 Source 02
 Analyte Group IOC-INORGANIC CONTAMINANTS
 Test Panel NIT-NITRATE SUITE
 Sample Location s/t
 Sample Type Unknown

Result Range, A/P, Un

Analyte DOH Num	Analyte Name	Result Range	Result Quantity	Maximum Contaminant Level	State Reporting Limit
0020	NITRATE-N	EQ	0.9600	10.0000	0.5000
0161	TOTAL NITRATE/NITRITE	EQ	0.9600		0.5000
0114	NITRITE-N	LT	0.1000	1.0000	0.1000

View Sample Detail - WSID 64940M - OUTLOOK ELEMENTARY SCHOOL

Collect Date 12/18/2019
 Lab Number 230
 Lab Name LabTest
 Sample Number 35302
 Source 03
 Analyte Group IOC-INORGANIC CONTAMINANTS
 Test Panel NIT-NITRATE SUITE
 Sample Location kt
 Sample Type Post-Treatment / Finished

Result Range, A/P,

Analyte DOH Num	Analyte Name	Result Range	Result Quantity	Maximum Contaminant Level	State Reporting Limit
0020	NITRATE-N	EQ	0.8600	10.0000	0.5000
0161	TOTAL NITRATE/NITRITE	EQ	0.8600		0.5000
0114	NITRITE-N	LT	0.1000	1.0000	0.1000

View Sample Detail - WSID 64940M - OUTLOOK ELEMENTARY SCHOOL

Collect Date 12/14/2020
 Lab Number 230
 Lab Name LabTest
 Sample Number 35011
 Source 03
 Analyte Group IOC-INORGANIC CONTAMINANTS
 Test Panel NIT-NITRATE SUITE
 Sample Location ng
 Sample Type Post-Treatment / Finished

Result Range, A/P, Units: N

Analyte DOH Num	Analyte Name	Result Range	Result Quantity	Maximum Contaminant Level	State Reporting Limit
0020	NITRATE-N	LT	0.5000	10.0000	0.5000
0114	NITRITE-N	LT	0.1000	1.0000	0.1000
0161	TOTAL NITRATE/NITRITE	LT	0.5000		0.5000

View Sample Detail - WSID 64940M - OUTLOOK ELEMENTARY SCHOOL

Collect Date 7/1/2021
 Lab Number 230
 Lab Name LabTest
 Sample Number 18302
 Source 03
 Analyte Group IOC-INORGANIC CONTAMINANTS
 Test Panel NIT-NITRATE SUITE
 Sample Location mop sink
 Sample Type Post-Treatment / Finished

Result Range, A/P, Units

Analyte DOH Num	Analyte Name	Result Range	Result Quantity	Maximum Contaminant Level	State Reporting Limit
0020	NITRATE-N	EQ	2.8300	10.0000	0.5000
0161	TOTAL NITRATE/NITRITE	EQ	2.8300		0.5000
0114	NITRITE-N	LT	0.1000	1.0000	0.1000

View Sample Detail - WSID 64940M - OUTLOOK ELEMENTARY SCHOOL

Collect Date 11/1/2022
 Lab Number 230
 Lab Name LabTest
 Sample Number 30517
 Source 03
 Analyte Group IOC-INORGANIC CONTAMINANTS
 Test Panel NIT-NITRATE SUITE
 Sample Location s/t
 Sample Type Unknown

Result Range, A/P, Units:

Analyte DOH Num	Analyte Name	Result Range	Result Quantity	Maximum Contaminant Level	State Reporting Limit
0020	NITRATE-N	EQ	3.8900	10.0000	0.5000
0161	TOTAL NITRATE/NITRITE	EQ	3.8900		0.5000
0114	NITRITE-N	LT	0.1000	1.0000	0.1000

View Sample Detail - WSID 64940M - OUTLOOK ELEMENTARY SCHOOL

Collect Date 6/1/2023
 Lab Number 230
 Lab Name LabTest
 Sample Number 15215
 Source 03
 Analyte Group IOC-INORGANIC CONTAMINANTS
 Test Panel NIT-NITRATE SUITE
 Sample Location s/t
 Sample Type Post-Treatment / Finished

Result Range, A/P, Unit

Analyte DOH Num	Analyte Name	Result Range	Result Quantity	Maximum Contaminant Level	State Reporting Limit
0020	NITRATE-N	LT	0.5000	10.0000	0.5000
0114	NITRITE-N	LT	0.1000	1.0000	0.1000
0161	TOTAL NITRATE/NITRITE	LT	0.5000		0.5000

View Sample Detail - WSID 64940M - OUTLOOK ELEMENTARY SCHOOL

Collect Date 6/3/2024
 Lab Number 230
 Lab Name LabTest
 Sample Number 16590
 Source 03
 Analyte Group IOC-INORGANIC CONTAMINANTS
 Test Panel NIT-NITRATE SUITE
 Sample Location s/t
 Sample Type Post-Treatment / Finished

Result Range, A/P, Unit

Analyte DOH Num	Analyte Name	Result Range	Result Quantity	Maximum Contaminant Level	State Reporting Limit
0020	NITRATE-N	EQ	4.1500	10.0000	0.5000
0114	NITRITE-N	LT	0.1000	1.0000	0.1000

View Sample Detail - WSID 64940M - OUTLOOK ELEMENTARY SCHOOL

Collect Date 6/2/2025
 Lab Number 230
 Lab Name LabTest
 Sample Number 26775
 Source 03
 Analyte Group IOC-INORGANIC CONTAMINANTS
 Test Panel NIT-NITRATE SUITE
 Sample Location s/t
 Sample Type Post-Treatment / Finished

Result Range, A/P, Un

Analyte				Maximum	
DOH Num	Analyte Name	Result Range	Result Quantity	Contaminant Level	State Reporting Limit
0020	NITRATE-N	EQ	4.0500	10.0000	0.5000
0114	NITRITE-N	LT	0.1000	1.0000	0.1000

File Original and First Copy with Department of Ecology
 Second Copy Owner's Copy
 Third Copy Driller's copy

126121

WATER WELL REPORT

STATE OF WASHINGTON

Notice of Intent **W122474**
 UNIQUE WELL I D # **AGT298**

Water Right Permit No

(1) OWNER Name **Outlook Elementary School** Address **1110 South 6th Street, Sunnyside, WA 98944**

(2) LOCATION OF WELL County **Yakima** NE 1/4 NW 1/4 Sec 20 T 10N R 22E

(2a) STREET ADDRESS OF WELL (or nearest address) **1110 So 6th Street Sunnyside WA 98944**

TAX PARCEL NO

(3) PROPOSED USE
 Domestic
 Irrigation
 DeWater
 Industrial
 Test Well
 Municipal
 Other

(4) TYPE OF WORK
 Owner's number of well (if more than one) _____
 New Well Method
 Deepened Dug Bored
 Reconditioned Cable Driven
 Decommission Rotary Jetted

(5) DIMENSIONS Diameter of well **10** inches
 Drilled **194** feet Depth of completed well **194** ft

(6) CONSTRUCTION DETAILS
 Casing Installed
 Welded **10** Diam from **+3** ft to **155** ft
 Liner installed Diam from _____ ft to _____ ft
 Threaded Diam from _____ ft to _____ ft

Perforations Yes No
 Type of perforator used _____
 SIZE of perforations _____ in by _____ in
 _____ perforations from _____ ft to _____ ft
 _____ perforations from _____ ft to _____ ft
 _____ perforations from _____ ft to _____ ft

Screens Yes No K Pac Location _____
 Manufacturer's Name _____
 Type **Stainless Steel** Model No _____
 Diam **6** Slot size **0 010** from **132 6** ft to **138 0** ft
 Diam **6** Slot size **0 040** from **158 1** ft to **188 7** ft

Gravel/Filter packed Yes No Size of gravel/sand **#4 / #8**
 Material placed from **193 8** ft to **126** ft

Surface seal Yes No To what depth? **18** ft
 Material used in seal **Cement Grout**
 Did any strata contain unusable water? Yes No
 Type of water? _____ Depth of strata _____
 Method of sealing strata off _____

(7) PUMP Manufacturer's Name _____
 Type _____ H P _____

(8) WATER LEVELS Land surface elevation _____ ft above mean sea level
 Static level _____ ft below top of well Date _____
 Artesian pressure **0 6** lbs per square inch Date **10/7/2002**
 Artesian water is controlled by **Height of Casing** (Cap valve etc)

(9) WELL TESTS Drawdown is amount water level is lowered below static level
 Was a pump test made? Yes No If yes by whom? _____
 Yield _____ gal /min with _____ ft drawdown after _____ hrs
 Yield _____ gal /min with _____ ft drawdown after _____ hrs
 Yield _____ gal /min with _____ ft drawdown after _____ hrs

Recovery data (time taken as zero when pump turned off) (water level measured from well top to water level)
 Time Water Level Time Water Level Time Water Level

Date of test _____
 Bailer test **60** gal /min with **3** ft drawdown after **1** hrs
 Airtest _____ gal /min with stem set at _____ ft for _____ hrs
 Artesian flow _____ g p m Date _____
 Temperature of water _____ Was a chemical analyses made? Yes No

(10) WELL LOG or DECOMMISSIONING PROCEDURE DESCRIPTION
 Formation Describe by color character size of material and structure and the kind and nature of the material in each stratum penetrated with at least one entry for each change of information Indicate all water encountered

MATERIAL	FROM	TO
Fine Sand Silty Brown	0	21
Silt Brown Silty	21	62
Sand & Gravel Silty Brown	62	88
Silt Brown	88	132
Broken Sandstone Decomposed Sandy	132	170
Very Coarse Gravel Cobbles Sandy Brown	170	187
Very Coarse Gravel Cobbles Sandy	187	194
Yellow Brown		

TPD FILE # 02 1361 07 PICATTI BROS

Work Started **8/6/2002** 19 Completed **10/8/2002** 19

WELL CONSTRUCTION CERTIFICATION

I constructed and/or accept responsibility for construction of this well and its compliance with all Washington well construction standards Materials used and the information reported above are true to my best knowledge and belief

Type or Print Name **James Vignali** License No **0987**
 (Licensed Driller/Engineer)

Tramee Name _____ License No _____

Drilling Company **Tacoma Pump & Drilling Co Inc**

(Signed) *James Vignali* License No **0987**
 (Licensed Driller/Engineer)

Address **30316 Mountain Highway Graham WA 98338**

Contractor's Registration No **TACOMPD203PF** Date **10/15/2002** 19

(USE ADDITIONAL SHEETS IF NECESSARY)

Ecology is an Equal Opportunity and Affirmative Action employer For special accommodation needs contact the Water Resources Program at (360) 407 6600 The TDD number is (360) 407 6006

File Original and First Copy with
Department of Ecology
Second Copy - Owner's Copy
Third Copy - Driller's copy

WATER WELL REPORT

Notice of Intent **W254627**
UNIQUE WELL I.D. # **APT871**

STATE OF WASHINGTON

Water Right Permit No.

300933

(1) OWNER: Name **SUNNYSIDE SCHOOL DISTRICT** Address **1110 S 6TH STREET, SUNNYSIDE, WA 98944**

(2) LOCATION OF WELL: County **YAKIMA** NE 1/4 NW 1/4 Sec 20 T 10 N R 22 W.M.

(2a) STREET ADDRESS OF WELL (or nearest address) **3800 VAN BELLE RD SUNNYSIDE WA**

TAX PARCEL NO. **221020-21006**

(3) PROPOSED USE: Domestic Industrial Municipal
 Irrigation Test Well Other
 DeWater

(4) TYPE OF WORK: Owner's number of well (if more than one) _____
 New Well Method: Bored
 Deepened Dug Driven
 Reconditioned Cable Jetted
 Decommission Rotary

(5) DIMENSIONS: Diameter of well **8** inches.
Drilled **243** feet. Depth of completed well **243** ft.

(6) CONSTRUCTION DETAILS:
Casing Installed: Welded **8** " Diam. from **+2** ft. to **242.6** ft.
 Liner installed " Diam. from ft. to ft.
 Threaded " Diam. from ft. to ft.

Perforations: Yes No
Type of perforator used _____
SIZE of perforations _____ in. by _____ in.
_____ perforations from _____ ft. to _____ ft.
_____ perforations from _____ ft. to _____ ft.
_____ perforations from _____ ft. to _____ ft.

Screens: Yes No K-Pac Location _____
Manufacturer's Name _____
Type _____ Model No. _____
Diam. _____ Slot size _____ from _____ ft. to _____ ft.
Diam. _____ Slot size _____ from _____ ft. to _____ ft.

Gravel/Filter packed: Yes No Size of gravel/sand _____
Material placed from _____ ft. to _____ ft.

Surface seal: Yes No To what depth? **65** ft.
Material used in seal **BENTONITE**
Did any strata contain unusable water? Yes No
Type of water? _____ Depth of strata _____
Method of sealing strata off _____

(7) PUMP: Manufacturer's Name _____
Type: _____ H.P.

(8) WATER LEVELS: Land-surface elevation _____ ft.
above mean sea level
Static level **8** / _____ ft. below top of well Date **1/4/2008**
Artesian pressure _____ lbs. per square inch Date _____
Artesian water is controlled by _____
(Cap, valve, etc)

(9) WELL TESTS: Drawdown is amount water level is lowered below static level
Was a pump test made? Yes No If yes, by whom?
Yield: _____ gal./min. with _____ ft. drawdown after _____ hrs.
Yield: _____ gal./min. with _____ ft. drawdown after _____ hrs.
Yield: _____ gal./min. with _____ ft. drawdown after _____ hrs.

Recovery data (time taken as zero when pump turned off) (water level measured from well top to water level)

Time	Water Level	Time	Water Level	Time	Water Level

Date of test _____
Bailer test _____ gal./min. with _____ ft. drawdown after _____ hrs.
Artest **300+** gal./min. with stem set at **210** ft. for **1** hrs.
Artesian flow _____ g.p.m. Date _____

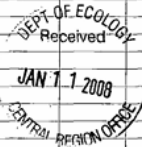
Temperature of water _____ Was a chemical analyses made? Yes No

(10) WELL LOG or DECOMMISSIONING PROCEDURE DESCRIPTION:

Formation: Describe by color, character, size of material and structure, and the kind and nature of the material in each stratum penetrated, with at least one entry for each change of information. Indicate all water encountered.

MATERIAL	FROM	TO
LOOM	0	55
CLAY	55	65
SAND	65	87
SAND & GRAVEL	87	93
CLAY	93	140
SAND	140	170
GRAVEL & SAND	170	243

300+ GPM @ 210
300 GPM @ 120
150 GPM @ 80



Work Started **1/2/2008** , 19. Completed **1/4/2008** , 19

WELL CONSTRUCTION CERTIFICATION:

I constructed and/or accept responsibility for construction of this well, and its compliance with all Washington well construction standards. Materials used and the information reported above are true to my best knowledge and belief.

Type or Print Name **TOM MCGUIRE** License No. **0357**
(Licensed Driller/Engineer)

Trainee Name _____ License No. _____

Drilling Company **RICK POULIN WELL DRILLING INC.**

(Signed) *Tom McGuire* License No. **0357**
(Licensed Driller/Engineer)

Address **1301 LANCASTER RD SELAH, WA 98942**

Contractor's Registration No. **RICKPWD944PW** Date **1/7/2008** , 19

(USE ADDITIONAL SHEETS IF NECESSARY)

Ecology is an Equal Opportunity and Affirmative Action employer. For special accommodation needs, contact the Water Resources Program at (360) 407-6600. The TDD number is (360) 407-6006.

